



PRODUCT GUIDE



***Built for  
Generations***





**Family Owned and Operated.  
American Made Products.  
Old School Customer Service.  
*Some Things Should Never Change.***



*Branick's Front Street location in Fargo, ND, circa 1920's.*

### ***Where our story begins ...***

In 1910, C.E. "Earl" Branick started a tire and vulcanizing shop in Dickinson, North Dakota. Finding it hard to do vulcanizing from a book and old molds, Earl decided to put things on hold and went to work for Firestone and B.F. Goodrich, building new tires and repairing old ones. In 1917, after serving in the Army, Earl established the Branick Vulcanizing Company in Fargo, North Dakota.

Earl was a visionary entrepreneur and constant innovator, inventing the original tire spreader which was the foundation for the diverse line of spreaders Branick manufactures and sells worldwide. Other products introduced by Earl included jacks, tire changers, inflation cages, and other specialty tools. Over the years, Branick has been issued over 100 patents for various designs.

Today Branick has gone on to be an industry leader in tire service and repair equipment, tire inflation equipment, and nitrogen systems. Branick holds the number one position for numerous products including tire spreaders, strut compressors, brake bleeders, and nitrogen inflation systems. With over 1,200,000 customers worldwide, Branick proudly remains focused on the tradition of quality instilled by Mr. Branick, while the team of R&D engineers continues his legacy of innovation. Our manufacturing location in the USA Heartland, Branick Industries is committed to maintaining the well-earned reputation for quality, service, innovation, and value.

## Table of Contents

### Tire Service 3

Tire Tool Station	Curing Rings
Tire Cart	Fleet Tire Spreaders
Tire Inspector/Tester	Tire Spreaders

### Under Car Service 7

Strut Spring Compressor
Strut Spring Compressor Accessories
Brake Bleeder
Brake Bleeder Adapters

### Tire Inflation Cages 9

### Nitrogen Tire Inflation 10

Mobile	Fleet & Custom
Towers	Analyzer
Wall Mounts	Marketing
Nitrogen Cart	Valve Caps

### Tire Inflators 13

BlockHead Inflator
BlockHead Airstations
The AirHead Inflator
AirHead Digital Inflator
Airhead Digital BK4 Inflator

### Specifications 15

# Branick®

## Our Promise.



Branick Industries has been a leader within the tire and automotive equipment industry since its inception in 1917. We are proud to manufacture quality, durable products in our facility located in Fargo, North Dakota. At Branick, we strive to be the partner-of-choice for industry dealers and distributors worldwide. We serve our customers with pride by providing personal customer service in a quick and efficient manner; providing information and support in regards to industry trends and products; and manufacturing solid, quality products. Thank you for allowing us to serve you.



## ACCURACY GUARANTEED

Branick inflators are individually tested to ensure accurate inflation pressures every time. Whether you're looking to comply with the Air Resources Board or just want to give your customers the best service you possibly can, look for this seal. It guarantees that our inflation devices have been certified for accuracy. Please visit our channel on YouTube to see behind the scenes testing of various inflation gauges and why ours are second to none.

## - CUSTOMER SUPPORT -

If you have a technical question regarding any Branick product, please call:

**800.437.4394**

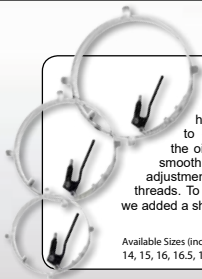
4245 Main Ave.  
Fargo, ND 58103

sales@branick.com  
www.branick.com

Follow us or find out more about Branick on:



# TIRE SERVICE



## Curing Rings

The best curing rings are made by Branick. The 9" clamping handle provides extra leverage to ensure you get a tight fit and the oil impregnated bushings provide smooth operation. The Acme threaded adjustment screw will outlast standard threads. To help prevent envelope pinching we added a shield on the slide mechanism.

Available Sizes (inches):

14, 15, 16, 16.5, 17, 17.5, 19.5, 20, 22, 22.5, 24, 24.5

## Tire Cart

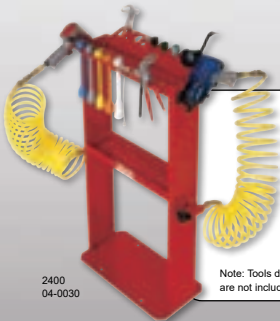
Often imitated but never been duplicated, the Branick TC400 Tire Cart has unmatched strength, durability and versatility. The easy-to-use foot operated opening / auto-closing tire cradle has extra large slotted pedals for better grip and provides constant clamping pressure on tire stacks to keep tires on the cart!

The largest cradle operating range on the market, will handle 20" to 37" tires and has a capacity of 400 lbs! The airless no-flat tires run on precision bearings and provide the feel of a pneumatic tire with the durability of a solid tire. Keep your shop running smoothly with the long-lasting Branick Tire Cart!

Our unique tire cart design lets you stack tires close together to get maximum use of your storage space.



TC400  
00-0136



## Tire Tool Station

Organize your tire tools! Dual station design provides access for two technicians, perfect between bays. Keeps frequently used tools on hand to save time.

- Universal top tray with slots for sockets and other tire service tools
- Universal impact gun cradles
- 1/2" airline connection (overhead or floor)
- Pre-drilled for floor mount
- Lower tray for additional storage
- 1/4" Swivel fittings
- 3/8" i.d. x 25' recoil airlines

Note: Tools displayed are not included.

2400  
04-0030

**Tire Inspector**



Operator Panel provides easy access to all controls.



**BTT-5700:**  
00-0165 - Steel tires only  
00-0167 - Steel and fabric tires

PATENT PENDING

**The BTT-5700 is the best tire inspector on the market today!**

The patent pending inspection system detects partial and complete punctures with ease. The foot pedal operated rotation uses a whisper quiet electric motor to make hearing flaws much easier but there is also a visible spark so you can also see flaws. Rotation speed is continuously variable to optimize inspection times.

**Independently Tested to Detect 99.5% of Flaws\***

The inspection platform of the BTT-5700 is completely adjustable from 15 to 32 inches and the operator panel is mounted on a swivel arm so it can be adjusted for the best ergonomics. There are two electrical outlets and four ports for air tools as well as a built in tool tray so everything can be done right at the machine.

\* Per data from a major retreading company at their retread facility.

**Service Parts**



We offer a full line of tire tester service parts to fit most major brands!

# TIRE SERVICE

## Tire Spreaders

Branick provides the most comprehensive line of tire spreaders in the industry for both inspection and repair. We offer entry level models, commercial models and portable units for inspection and repair of passenger, light truck, truck, OTR, and AG tires; as well as industrial spreaders for larger tire repair centers. Built with performance, ergonomics and durability in mind to provide years of worry-free service.

### Fleet Tire Spreaders



EF-HD  
900-103

Heavy Duty air powered tire spreader for OTR, AG, truck, certain aircraft and commercial tires including super singles.



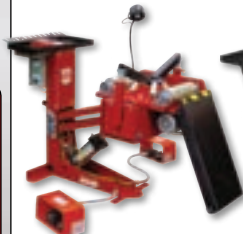
EF  
900-102

Air powered tire spreader for OTR, AG, passenger, truck and commercial tires including super singles.



5200  
00-0168

Air powered sectional tire spreader, perfect for service truck use, will spread OTR, AG, truck, passenger, and commercial tires, including super singles.



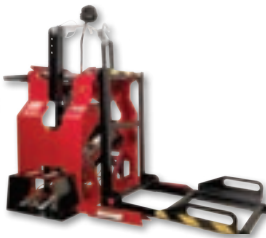
5700  
00-0163 **PATENT PENDING**

Adjustable height spreader with electric rotation and air powered lift and spread. For passenger, truck and commercial tires, including super singles.



5550  
00-0048

Adjustable height tire spreader for passenger, truck and commercial tires including super singles.  
5550M - Hi-base monorail spreader.



5300  
00-0151

Air powered tire spreader with tire lift for passenger, truck and commercial tires, including super singles.

**Tire Spreaders**



5120  
00-0049  
Passenger and light truck  
air powered tire spreader.



5045  
00-0150  
Passenger and light truck  
tire spreader with light,  
rollers and gas springs.

Optional accessories  
available for the 5045:



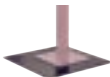
Optional Cabinet  
05-0056



Optional Riser  
05-0121

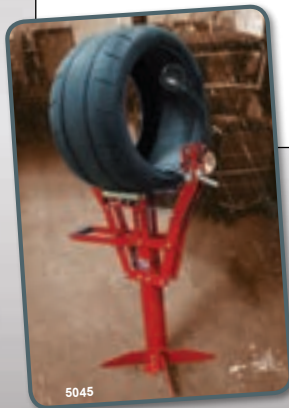


Optional accessories  
available for the 5025:



Optional Base  
05-0139

5025  
00-0161  
Passenger and light truck tire  
spreader.



5045

The Branick 5045 Tire Spreader is the perfect solution for all passenger and light truck tires. Our design includes the popular saw tooth adjustable spread hooks for fast and reliable adjustment. The gas shock assisted spread arms are positioned to easily handle passenger, light truck and Low-Pro tires. The zinc plated rollers make inspection simple and effortless. The bright LED light provides great visibility.

If you prefer air power, the 5120 has air powered spread arms to save time and effort.



LED Light Fixture  
also available as a  
service part  
40-0090

# UNDER CAR SERVICE

Strut Spring  
Compressor



**Our Model 7600 is the "industry standard!"** The 7600 will handle the toughest applications including Ford F-150, Toyota Rav-4 and Jeep KL Cherokee Trailhawk **without adapters** and is the only compressor certified for the Cadillac ATS. With rugged steel construction, an integrated structural ring guard and increased compression stroke the 7600 is the only compressor you'll need.



Optional Equipment



Bench Mount  
761  
05-0125



Mobile Cart 764  
00-0137

The Branick Strut Spring Compressor is built to handle the toughest struts and springs:



Jeep KL Cherokee  
Trailhawk

Ford  
F-150

Toyota  
RAV4

Chrysler  
Minivan

Chevrolet  
Camaro

7600  
00-0138

# Branick

UNDER CAR SERVICE



**Brake Bleeder**



The Branick G300 pressure bleeder is perfect for both conventional and anti-lock brake systems, allowing one-man operation. The diaphragm keeps brake fluid and air separated so air will never be introduced into the brake lines. The rolling tank holds up to 4 gallons of fluid.

The G300 comes with the two most common adapters, 29G and 45G9. The G300A is the brake bleeder only. Custom adapters are available for all vehicle makes and models.



G300  
900-679

G300A  
900-673

**Brake Bleeder Adapters**



G304  
643-239  
Foreign car adapter set  
(includes: (1) 20, (2) 29G, (1) 22A, (1) 35G)



G310  
05-0122  
GM dual bleeding attachment and bypass adapter kit  
(includes: (1) 39GC, (1) 20)



22A  
901-062  
7 piece expanding adapter set



20  
901-051  
Dual bleeding attachment



26G  
901-052  
Ford ABS adapter



29G  
901-053  
3-1/4" diameter adapter



35G  
901-054  
Used with 22A adapter set



39GC  
01-0071  
GM bypass adapter



41G9  
901-056  
3-1/2" x 6-1/2" adapter



42G  
901-057  
4" x 8" adapter



45G9  
901-058  
4-1/8" diameter adapter



47G  
901-059  
Chrysler adapter set used with dual bleeding attachment

# TIRE INFLATION CAGES

The Original

Tire Inflation Cages 

We understand that safety is a priority and all of our cages are constructed with safety in mind. Branick uses only the highest quality, 2 1/4" diameter, high-yield steel tubing that has expansion properties to ensure strength and durability.

**All Branick inflation cages meet or exceed the requirements of OSHA Standard No. 29 CFR Part 1910.177.**

The design is engineered for maximum energy displacement and all our 54" cages can handle super-singles! Add the No-Mar Mesh option for ultimate safety and, to improve efficiency, add the Blockhead Auto Inflator and the 210 or 215 Cage Rollers.

Rim saving "No-Mar" poly side strips!  
(optional on all 4-bar cages)



2040 NMDM  
00-0171  
No-Mar Double  
Mesh Cage

Watch our  
video!



210  
04-0184  
3 - 5 Bar Cage Rollers  
215  
04-0194   
6 Bar Cage Rollers



2040  
00-0127  
(pictured with the  
Blockhead Auto Inflator)

PATENT PENDING



2010  
00-0166  
Utility Tire Safety Cage



2130  
03-0232



2220  
00-0125



2040  
00-0127



2230  
900-308



2240  
900-413



2250  
900-307



2260  
900-309



2264 Mesh  
900-598

TIRE INFLATION CAGES

# NITROGEN TIRE INFLATION PRODUCT GUIDE 10

Whether you run a motorcycle shop or a large trucking fleet, Branick has a nitrogen system that's right for you. Branick's green family of nitrogen systems are built with Air Products PRISM® Membrane technology. The PRISM® Membrane removes oxygen, moisture and other contaminants. Our exclusive Air Products membranes are the most efficient available, requiring less compressor time and reducing operating costs. It also makes our systems the fastest on the market.

Nitrogen is a dry, inert gas. Maintaining the proper nitrogen purity in your tire and removing oxygen from the tire means less damage to the inner liners, steel belts and rims due to oxidation and condensation. Nitrogen, due to its larger molecular size, is also slower to migrate out of a tire than oxygen which means the tire stays properly inflated longer. The benefits of holding proper tire pressure longer with nitrogen include fewer TPMS warnings, extended tire life, lower fuel costs and a more reliable tire which maximizes vehicle handling and reduces blowout potential.



We proudly use Air Products PRISM® Membranes.



Branick's nitrogen generators are the fastest and most efficient and the PRISM® membranes require less feed air than all other nitrogen systems.

- 5 year membrane warranty
- 5 years of free filter elements
- 95% purity guaranteed for passenger tires
- 97% purity for truck tires
- Working pressures up to 200 psi
- Simple twist of a dial for higher purity and output of nitrogen
- Our properly sized systems ensure ready and "on-demand" fills; no waiting on an undersized system
- Long term reliability and ease of operation make our generators the industry choice

**Reduce TPMS Warnings!**



# Branick®

[www.branick.com](http://www.branick.com)

# NITROGEN TIRE INFLATION

## Mobile



### User-friendly Mobile Units



This simple system has a 30 gallon tank, six inflation ports (four hoses included) that can handle duals or spares, and our BlockHead Automatic Tire Inflator for quick, hands-free tire inflation.

Model 465 00-0124

### Model 465



Hands-free, complete auto-inflation system with total mobility. Includes an internal storage tank. Inflate up to 6 tires at once. 485 with 4 hose reels, 475 w/o hose reels.

Model 475 00-0085  
Model 485 00-0107

### Model 485 / 475



The 685 provides the same features as the 485 with extra output to handle bigger SUV tires and light volume commercial truck tires. 685 with 4 hose reels, model 675 w/o hose reels.

Model 675 00-0086  
Model 685 00-0108

### Model 685 / 675



## Towers



### High Output Towers

One of our most popular nitrogen generators! Can handle high volume passenger and light truck as well as light commercial truck applications.

Model 500 00-0061

### Model 500



Perfect for high volume passenger and light truck applications, but can also handle most commercial trucks. Will inflate most truck tires in 3 minutes!

Model 1000 00-0062

### Model 1000



The triple membrane system in the Model 1500 is ideal for high volume commercial shops and over-the-road applications.

Model 1500 00-0063

### Model 1500



## Wall Mounts



### Space Saving Wall Mounts

Our most economical membrane model. This entry level generator is the ideal solution for bike and small vehicle shops.

Model 350 00-0071

### Model 350



Low cost and high performance, with many of the same features as more expensive models. Ideal for medium duty passenger and light truck applications.

Model 450 00-0083

### Model 450



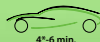
When you need extra power, step up to the 650. It will handle everything from light duty to commercial truck applications.

Model 650 00-0084

### Model 650



Our systems provide unmatched performance:



4\*-6 min.



10\*\*-12 min.



45\*\*\* min.

\*Honda Accord 32psi. - 4 mins, 175/65R15 \*\*Dodge Ram 1500 10 min. @35 psi., 245/70-17 \*\*\*Tractor trailer with 18, 11R/22.5  
Two complete cycles, 150 psi. incoming, greater than 95% purity.



Watch our video!

### NITROGEN CART



Model  
**130**

The Model 130 can be used to automatically convert up to six tires at once (four hoses included). Just attach the clip-on chucks, set the pressure, and hit start. The rechargeable battery powers the unit all day or it can be plugged into a 110v outlet. With features like a durable steel body, top-off function and a pressure range up to 145 psi, the Model 130 will make your nitrogen service simple, fast and economical.

For use with nitrogen bottle or nitrogen generator.

Model 130 00-0139



### NITROGEN ANALYZER

Simple and easy to use. Test nitrogen purity on any generator or tire. Large print display makes it easy to read.



Model 90  
05-0069

Chuck Type: Dual Foot

### FLEET & CUSTOM APPLICATIONS



Large fleets, including WalMart™, Snyder™ and Safeway™, have justified the return on investment and are using Branick Nitrogen Systems to inflate their fleet's tires with nitrogen. They chose Branick because we build the best equipment and we stand behind it.



### NITROGEN P PACKAGE

Don't just offer nitrogen, sell it, with our Nitrogen P Package that helps explain the benefits to your customers. Package includes marketing materials (caps, banner, brochures, and counter display) and a nitrogen analyzer. Everything you need to support your nitrogen service.



### VALVE CAPS



Double Seal  
Flow-Through  
59-0047

Chrome Brass  
59-0021

Green Plastic  
59-0018

Green Aluminum  
59-0019

Chrome Plastic  
59-0023

Nitrogen valve caps have become the standard way of noting nitrogen inflated tires. We have a variety available, including our heavy duty green Double Seal Flow-Through caps for commercial fleets that have two valve seals to lock air in, yet allow the tire to be tested and adjusted without removing the cap.

SAFeway Walmart

CATERPILLAR™



While most nitrogen manufacturers would have to build a completely unique system, Branick nitrogen systems can easily be linked to create the power to handle any application. We can evaluate, design and install a system that is right for you. For more information contact us at 1-800-437-4394.

# TIRE INFLATORS

## BLOCKHEAD AUTO INFLATOR

**Remove the manual process from tire inflation.** No more stick gauges, no wasted time and fewer TPMS warnings. With the Blockhead from Branick we have made auto inflation more affordable than ever. The Blockhead allows you to auto inflate, auto deflate, is nitrogen conversion ready, has a safety feature built in for high pressure tires, includes an air chuck and single hose and comes with a 1 year warranty.



### BLOCKHEAD AUTO INFLATOR SPECIFICATIONS

#### FEATURES

Operating Pressure	0-145 psi
Maximum Inlet Pressure	218 psi
Blockhead Inflator w/single hose	40-0075

- Just connect hoses, set pressure and walk away.
- Extremely accurate with testing standards less than 0.5% of full scale.
- Each inflator comes with its own testing calibration certificate



## Blockhead Airstations



The Accuracy  
You Need  
for TPMS!



Model 155 Wall Mount Airstation  
4 hoses included  
00-0160

Model 145 Stationary Airstation  
Single hose included  
00-0159



Blockhead Cage Mounting Bracket  
(Inflator not included)  
04-0143



**BLOCKHEAD  
AIRSTATIONS**

The Blockhead Airstations give you all the performance of the Blockhead Auto Inflator with flexible mounting. With stand-up and wall mount options you can get what you need where you need it. There's even a four hose model that allows you to check an entire vehicle with minimal effort.

**AIRSTATION SPECIFICATIONS**

MODEL	CHUCK STYLE	HOSES	MODEL
145	Stationary	1	00-0159
155	Wall Mount	4	00-0160

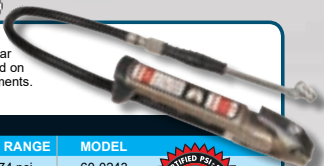
- Extremely accurate with testing standards less than +/-2 psi
- Each gauge comes with its own testing calibration certificate

**HEAVY DUTY  
TIRE INFLATORS**

up to 174 psi



The AirHead heavy duty gauge has a hi-flo valve for fast fills, lightweight aluminum body and an easy to read magnified linear scale. It allows you to inflate and deflate while staying engaged on the tire valve stem. Pressure range of 0-174 psi in 2 psi increments.

**INFLATOR SPECIFICATIONS**

HOSE LENGTH	CHUCK STYLE	PSI RANGE	MODEL
21" Hose	Twin Angled	0-174 psi	60-0243
6' Hose	Single Lock-On	0-174 psi	60-0244

- Extremely accurate with testing standards less than +/-2 psi
- Each gauge comes with its own testing calibration certificate

**DIGITAL TIRE  
INFLATORS**

up to 250 psi



The AirHead Digital BK4's backlit digital display is visible in any light. Inflate and deflate on the valve stem. PSI, BAR and kPA with last unit memory. Compact and durable with fast 18 cfm flow rate. Pressure range of 4-250 psi in 0.1 psi increments.

**INFLATOR SPECIFICATIONS**

HOSE LENGTH	CHUCK STYLE	PSI RANGE	PART NO.
21" Hose	Twin Angled	4-250 psi	60-0351
6' Hose	Single Lock-On	4-250 psi	60-0358

- Extremely accurate with testing standards less than +/-2 psi
- Each gauge comes with its own testing calibration certificate



# PRODUCT SPECIFICATIONS

## Nitrogen Systems

	Maximum Air Input	Nitrogen Output* (cfm)	Nitrogen Purity	Operating Temperature	Inlet Port (female)	Aux Outlet Port (female)	Nitrogen Purity Port	Auto Shut-Off	Pre-Filters
130	218 psi	-	-	-4° to 158° F	1/4" NPT	No	No	No	-
465	175 psi	4	Set 95% - 99.5%	40° to 150° F	1/4" NPT	No	Yes	No	2
475	175 psi	4	Adjustable 95% - 99.5%	40° to 150° F	3/8" NPT	3/8" NPT	Yes	Yes	2
485	175 psi	4	Adjustable 95% - 99.5%	40° to 150° F	3/8" NPT	3/8" NPT	Yes	Yes	2
675	175 psi	8	Adjustable 95% - 99.5%	40° to 150° F	3/8" NPT	3/8" NPT	Yes	Yes	2
685	175 psi	8	Adjustable 95% - 99.5%	40° to 150° F	3/8" NPT	3/8" NPT	Yes	Yes	2
350	175 psi	3.2	Set 95% - 99.5%	40° to 150° F	3/8" NPT	3/8" NPT	Yes	No	2
450	175 psi	4.3	Adjustable 95% - 99.5%	40° to 150° F	3/8" NPT	3/8" NPT	Yes	Yes	2
650	175 psi	8.6	Adjustable 95% - 99.5%	40° to 150° F	3/8" NPT	3/8" NPT	Yes	Yes	2
500	175 psi	7.1	Adjustable 95% - 99.5%	40° to 150° F	3/8" NPT	3/8" NPT	Yes	Yes	2
1000	175 psi	14.2	Adjustable 95% - 99.5%	40° to 150° F	3/8" NPT	3/8" NPT	Yes	Yes	2
1500	175 psi	21.3	Adjustable 95% - 99.5%	40° to 150° F	3/8" NPT	3/8" NPT	Yes	Yes	2

\*Nitrogen output is dependent on temperature, pressure and purity.

## Spring Compressor

	Max Compression (lbs)	Max Spring Diameter (inches)	Min Spring Diameter (inches)	Adaptors Required	Shipping Weight (lbs)	Dimensions (inches)
7600	3000	11.5	3.5	None	100	44 x 18 x 20

## Tire Inspector

	Max Bead Dia.	Max Section Width (in/mm)	Working Height (inches)	Electrical Requirement*	Tire Capability	Inspection Cycle Time	Tire Lift / Ramp	Shipping Weight (lbs)	Max Dimensions (inches)
BTT-5700	24.5	18 / 455	15 - 32	120v 15 amp	Steel Only Steel/Fabric Option	15 sec <sup>1</sup>	Roll On	880	56 x 57 x 82

\*option for 220v 50hz or 440v 50hz available

<sup>1</sup>Average per tire. Time varies based on number of flaws.



## Nitrogen Systems (cont.)

	N2 Pressure Gauge	Air Pressure Gauge	Hoses	Inflator Set Pressure Range	Inflator Accuracy	Display Increments	Power Supply	Rechargeable	Shipping Weight (lbs)	Dimensions (inches)
<b>130</b>	No	No	4	5 psi to 145 psi	± 0.5% Full Scale	1 psi	12v DC SLA	Yes	160	20 x 23 x 59
<b>465</b>	Yes	No	4	5 psi to 145 psi	± 0.5% Full Scale	1 psi	120V 50/60 Hz	No	260	24 x 25 x 54
<b>475</b>	Yes	Yes	4	5 psi to 145 psi	± 0.5% Full Scale	1 psi	12v DC SLA	Yes	380	29 x 29 x 48
<b>485</b>	Yes	Yes	4 (Reels)	5 psi to 145 psi	± 0.5% Full Scale	1 psi	12v DC SLA	Yes	460	32 x 29 x 48
<b>675</b>	Yes	Yes	4	5 psi to 145 psi	± 0.5% Full Scale	1 psi	12v DC SLA	Yes	400	29 x 29 x 48
<b>685</b>	Yes	Yes	4 (Reels)	5 psi to 145 psi	± 0.5% Full Scale	1 psi	12v DC SLA	Yes	470	32 x 29 x 48
<b>350</b>	Yes	Yes	No	-	-	-	-	No	110	8 x 15 x 47
<b>450</b>	Yes	Yes	No	-	-	-	120V 50/60 Hz	No	120	8 x 20 x 47
<b>650</b>	Yes	Yes	No	-	-	-	120V 50/60 Hz	No	135	8 x 20 x 47
<b>500</b>	Yes	Yes	No	-	-	-	120V 50/60 Hz	No	210	19 x 19 x 72
<b>1000</b>	Yes	Yes	No	-	-	-	120V 50/60 Hz	No	220	19 x 19 x 72
<b>1500</b>	Yes	Yes	No	-	-	-	120V 50/60 Hz	No	230	19 x 19 x 72

## Tire Spreaders

	Max Bead Dia.	Max Section Width (in/mm)	Spread Arm Type	Spread Arm Operation	Working Height (inches)	Tire Lift / Ramp	Light	Hook Adjustment	Shipping Weight (lbs)	Dimensions (inches)
<b>5025</b>	20	12 / 305	Manual	Hand	35	No	No	Sawtooth / Pin	30	10 x 10 x 36
<b>5045</b>	20	13.5 / 343	Manual	Hand	36	No	LED	Sawtooth	80	22 x 15 x 45
<b>5120</b>	22.5	14 / 356	Air	Foot	36	No	LED	Lock Pin	150	29 x 27 x 40
<b>5200</b>	OTR/AG	24/610	Air	Foot	Floor Level	No	No	Lock Pin	190	39 x 25 x 18
<b>5300</b>	24.5	18 / 458	Air	Foot	31	Air Lift	LED	Lock Pin	350	34 x 35 x 38
<b>5550</b>	24.5	18 / 458	Air	Hand	Adj. 14-35.5	Roll On	LED	Lock Pin	450	33 x 32 x 62
<b>5550M</b>	24.5	18 / 458	Air	Hand	Adj. 24-45.5	Monorail	LED	Lock Pin	500	34 x 41 x 62
<b>5700</b>	24.5	18 / 458	Air	Hand	Adj. 15-32	Roll On	LED	Lock Pin	660	47 x 29 x 65
<b>EF</b>	25.5	16.5 /	Air	Foot	48	Air Lift	No	Semi-Auto	500	60 x 29 x 78
<b>EF/HD</b>	28	21.5 /	Air	Foot	48	Air Lift	No	Semi-Auto	800	64 x 38 x 80

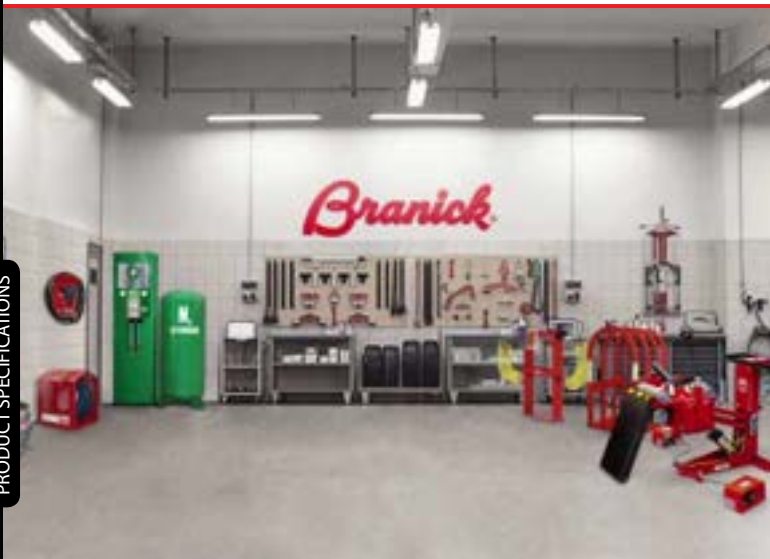
# PRODUCT SPECIFICATIONS

## Blockhead Inflation Systems

	Max Inlet Pressure	Max Operating Pressure	Accuracy	Display Increments	Hose (quantity)	Chuck Type (qty)	Power Supply	Placement	Shipping Weight (lbs)	Dimensions (inches)
<b>145</b>	218 psi	145 psi	± 0.7 psi	1 psi	16.5' (1)	Lock-on (1)	Standard 110v	Floor	30	37 x 11 x 7
<b>155</b>	218 psi	145 psi	± 0.7 psi	1 psi	25' (4)	Lock-on (4)	Standard 110v	Wall	22	20 x 12 x 4
Blockhead	218 psi	145 psi	± 0.7 psi	1 psi	17' (1)	Lock-on (1)	Standard 110v	Wall	8	16 x 16 x 9

## Handheld Inflators

	Tire Inflation Range (psi)	Max Inlet Pressure (psi)	Accuracy (psi)	Display	Hose Length	Chuck	Shipping Weight (lbs)	Shipping Dimensions (inches)
<b>Digital Airhead 21"</b>	4 - 250	260	± 2	Illuminated LED	21"	Twin Angled	3	13 x 3 x 4
<b>Digital Airhead 6"</b>	4 - 250	260	± 2	Illuminated LED	72"	Lock-On	5	13 x 3 x 4
<b>Airhead 21"</b>	0 - 174	220	± 2	Magnified Linear	21"	Twin Angle	2	13 x 3 x 4
<b>Airhead 6"</b>	0 - 174	220	± 2	Magnified Linear	72"	Lock-On	4	13 x 3 x 4



## Tire Inflation Cages

	Number of Bars	Max Tire Width (inches)	Max Tire Diameter (inches)	Max Inflation Pressure (psi)	Shipping Weight (lbs)	Dimensions (inches)
<b>2010</b>	N/A	16	20.5	100	40	20 x 20 x 25
<b>2220</b>	2	21.5	54	120	76	28 x 17 x 60
<b>2130</b>	3	21.5	34	120	120	28 x 20 x 40
<b>2230</b>	3	21.5	54	120	140	28 x 20 x 60
<b>2040</b>	4	21.5	34	120	160	28 x 28 x 40
<b>2240</b>	4	21.5	54	120	170	28 x 28 x 60
<b>2250</b>	5	21.5	54	120	230	28 x 36 x 60
<b>2260</b>	6	29	59	120	385	35 x 41 x 62
<b>2264</b>	6	29	59	120	470	35 x 41 x 62

## Brake Bleeder

	Reservoir Capacity (gal)	Max Pressure (psi)	Pressure Regulation	Quick Coupler	Adaptors Included	Shipping Weight (lbs)	Dimensions (inches)
<b>G300</b>	4	60	Yes	1/4" NPT	2	25	14 x 14 x 24
<b>G300A</b>	4	60	Yes	1/4" NPT	-	23	14 x 14 x 24

## Tire Cart

	Max Capacity (lbs)	Max Tire Diameter (inches)	Min Tire Diameter (inches)	Max Stack Height (inches)	Shipping Weight (lbs)	Dimensions (inches)
<b>TC400</b>	400	37	20	61.5	120	35 x 30 x 68

## Tool Station

	Tool / Impact Gun Slots	Hoses (qty)	Min Tire Diameter (inches)	Swivel Quick Connects (qty)	Air Inlet Port	Shipping Weight (lbs)	Dimensions (inches)
<b>2400</b>	22 / 2	25' Coil (2)	20	1/4" NPT (2)	1/4" NPT	57	39 x 26 x 11

## Tire Cutter

	Max Tire Diameter (inches)	Max Tire Cross Section (inches)	Max Tread Width (inches)	Oil Reservoir (gals)	Shipping Weight (lbs)	Dimensions (inches)
<b>HD-BTC</b>	50	19	16	25	2800	56 x 77 x 78



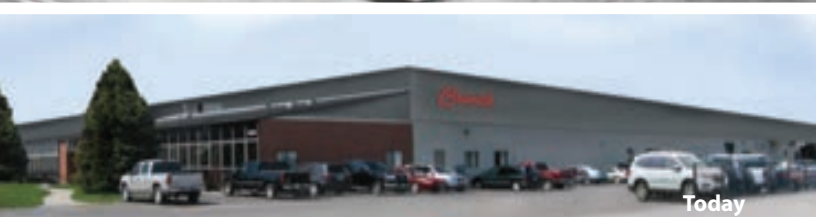
1920s



1940s



1960s



Today

Find a distributor near you, by calling:

**800.437.4394**

or email: [sales@branick.com](mailto:sales@branick.com)

[www.branick.com](http://www.branick.com)



4245 Main Ave. • Fargo, ND 58103